

## TORNIO CNC MAZAK SUPER QUICK TURN 250MS



**RIA DI MAURIZIO MENON**

Viale Lombardia, 69 - 20847 - ALBIATE - Mb

Telefono 333 1365767 Mail info@riamacchine.it

P.Iva 02530830963 Cod.Fisc. MNNMRZ59P24F704H

www.riamacchine.it

# RIA MACCHINE

TEL. 333 1365767

WWW.RIAMACCHINE.IT

EMAIL INFO@RIAMACCHINE.IT



## RIA DI MAURIZIO MENON

Viale Lombardia, 69 - 20847 - ALBIATE - Mb

Telefono 333 1365767 Mail info@riamacchine.it

P.Iva 02530830963 Cod.Fisc. MNNMRZ59P24F704H

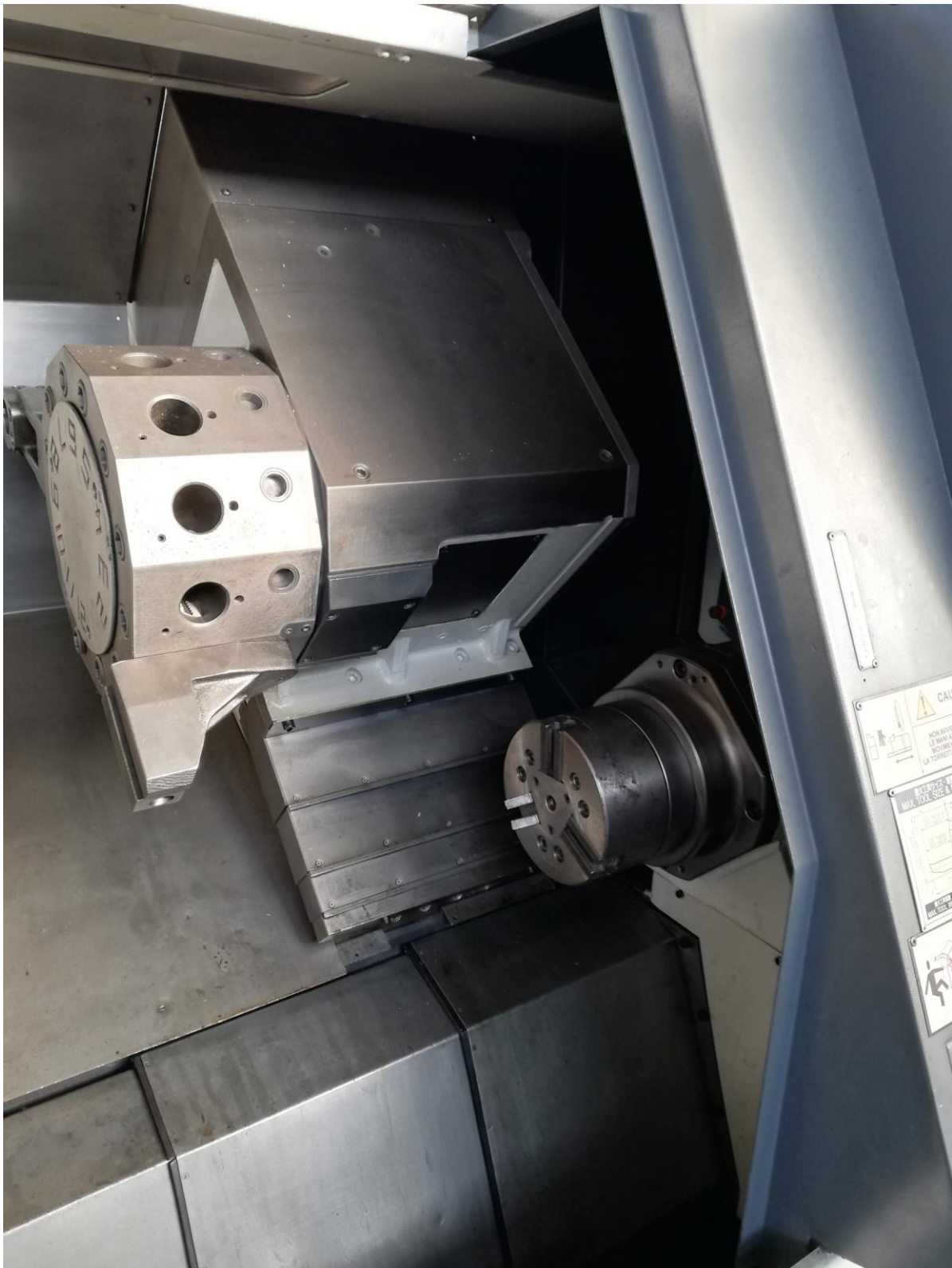
www.riamacchine.it

# RIA MACCHINE

TEL. 333 1365767

WWW.RIAMACCHINE.IT

EMAIL INFO@RIAMACCHINE.IT



## RIA DI MAURIZIO MENON

Viale Lombardia, 69 - 20847 - ALBIATE - Mb

Telefono 333 1365767 Mail info@riamacchine.it

P.Iva 02530830963 Cod.Fisc. MNNMRZ59P24F704H

www.riamacchine.it

# RIA MACCHINE

TEL. 333 1365767

WWW.RIAMACCHINE.IT

EMAIL INFO@RIAMACCHINE.IT



## RIA DI MAURIZIO MENON

Viale Lombardia, 69 - 20847 - ALBIATE - Mb

Telefono 333 1365767 Mail info@riamacchine.it

P.Iva 02530830963 Cod.Fisc. MNNMRZ59P24F704H

www.riamacchine.it

# RIA MACCHINE

TEL. 333 1365767

WWW.RIAMACCHINE.IT

EMAIL INFO@RIAMACCHINE.IT



## RIA DI MAURIZIO MENON

Viale Lombardia, 69 - 20847 - ALBIATE - Mb

Telefono 333 1365767 Mail info@riamacchine.it

P.Iva 02530830963 Cod.Fisc. MNNMRZ59P24F704H

www.riamacchine.it

## Work-capacity

Max. swing diameter	525 mm
Max. swing diameter over cross-slides	350 mm
Max. machining diameter	300 mm
Max. bar material diameter	64 mm

## Main-spindle

Spindle speed	35 - 4.000 RPM
Main spindle motor	18,5 kW
Max. torque	350 Nm
Spindle bore	76 mm
Spindle indexing increments	0° - 360°/0,001 °

## Second-spindle

Spindle speed	35 - 4.000 RPM
Power	7,5 kW
Max. torque	57 Nm
Spindle indexing increments	72 Positionen/5 °

## Turret

Turret tool capacity	12
----------------------	----

## Rotary tools

Spindle speed	25 - 4.500 RPM
Power	3,7 kW
Max. torque	35 Nm

## Travel

X-axis stroke	190 mm
Z-axis stroke	575 mm
B-axis stroke	585 mm

## Feedrate

X-axis	30 m/min
Z-axis	30 m/min
B-axis	18 m/min

## Cutting feed rate

X/Z-axis	0 - 5.000 mm/min
----------	------------------

## Machine-data

Electrical power supply	40 KVA
Machine weight	5.450 kg
Machine size (L x B x H), approx.	3,45 x 1,80 x 2,00 m

## RIA DI MAURIZIO MENON

Viale Lombardia, 69 - 20847 - ALBIATE - Mb

Telefono 333 1365767 Mail info@riamacchine.it

P.Iva 02530830963 Cod.Fisc. MNNMRZ59P24F704H

[www.riamacchine.it](http://www.riamacchine.it)

## **ACCESSORIES**

### **Normal equipment**

---

- Hydr. KITAGAWA chuck B-210 for main spindle, diameter 254 mm
- Hydr. KITAGAWA chuck B-206 for second spindle, diameter 169 mm
- Tool setter (MAZAK Tool Eye System)
- C-axis
- Double foot switch to open/close chuck for main and back spindle
- Automatic opening/closing of chuck
- Chuck status feedback (open/closed)
- Front door lock
- Compl. Coolant system
- Coolant and chip protection due to fully enclosed workspace
- Workspace illumination
- Synchron-tapping
- Tool check as background function
- Navigation monitoring display
- PCMCIA port
- IC Port
- Interface for MAZATROL DATA TRANSFER
- Documentation

### **Optional equipment**

---

- IRCO barfeeder, Model: ILS-MUK-10016-III, YOM 2017
- Interface for barfeeder
- Autom. parts catcher
- Overload monitoring system
- Autom. Switch on / off including warm-up function
- Counter spindle equipped with ejector
- synchronous thread cutting for driven tools
- CNC option package EIA / ISO, content of the package:
  - input / cancellation of the polar coordinate input (G122 / G123)
  - User macro (100 variables G65-G67)
  - user macro common variables (600)
  - helix interpolation (EIA / ISO)
  - EIA / ISO-input function
  - input / cancellation of the polar
  - Selection of the workpiece coordinate system
- Drawing data direct input function
- Indicating lamp for processing status
- High pressure coolant
- Band filter
- MAYFRAN Chip conveyor
- 10 pieces static tool holders
- 2 pieces rotary tool holders